

ASD-N DISCOVER

Official Newsletter from ASD-N Cross-Curricular Team



STEM in NB

PARKS CANADA'S COASTIE INITIATIVE GETS YOU IN THE PICTURE WITH SCIENCE

Kouchibouguac and Fundy National parks are taking part in a "Coastie" initiative where researchers at the University of Windsor will analyze selfie photos taken on the coast.

They will use these photos to track changes to the coastlines, including erosion, storm surges and ice coverage, vegetation, beach use and even rip currents. Read more here:

<https://bit.ly/2Y3cYFc>

Could you set up a "coastie" station in your community to track environmental changes?



Inside Scoop

STEM North Home Learning Resources

<https://bit.ly/3pTMQ1p>

Learning from the Land/[Weji-kino'masulti'kw maqamikek Series](#)

NOVEMBER 2 2021

ASD-N [Climate Education Capacity Building Grant](#)

DEADLINE:
DECEMBER 10, 2021

Smarter Science D2L Course (Gr. 3-8)

[DESIRE2LEARN](#)

STEM North
[HTTP://STEMNORTH.NBED.NB.CA/](http://STEMNORTH.NBED.NB.CA/)

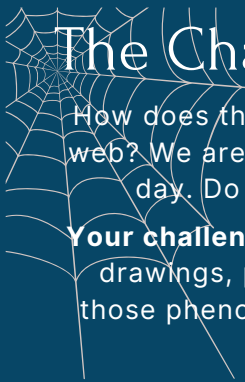
In Local News...

SUGARLOAF HIGH TEAMS UP WITH RESTIGOUCHE WATERSHED

Sugarloaf High School has teamed up with Learning from the Land to be the "watershed hosting school". This means their bell schedule determines the program schedule for an amazing day of Virtual Learning. On Nov 2, students are invited to meet biologists, foresters, conservationists, salmon researchers, park rangers, story tellers and bug experts! MORE INFO AND ZOOM LINK HERE:

<https://bit.ly/2ZDVUpO>

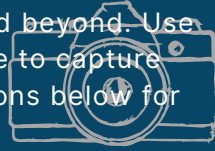




The Challenge: Our World & Beyond

How does the moon affect tides? How does a spider not stick to its web? We are surrounded by natural activities and phenomena every day. Do you ever wonder how or why something happens?

Your challenge is to observe and record our world and beyond. Use drawings, photos, videos, slow-motion or time-lapse to capture those phenomenal moments! Check out the Explorations below for some ideas to get started.



ATTENTION

SHARE YOUR LEARNING!

Fill out this short form to be entered to win monthly prizes that support learning in your classroom!

<https://bit.ly/3mwl7vu>



K-2 Exploration

The fall weather is really setting in and winter is just around the corner. Insects are harder to find when lifting rocks and digging in the ground. Make a chart of four different insects and keep tally marks to keep track of how many you find.



3-5 Exploration

*Crescent, gibbous, waxing, waning.
What moon phase can you be naming?
Look up to see the moon tonight,
showing off its phase so bright!*

Keep a visual moon phase journal for 5-7 days. Can you see a difference each night? Why do the moon phases change?

6-8 Exploration

*Temperature high, temperature low
Integers are everywhere, don't you know?
Sea level high, sea level low.
Moon phases affect the water flow.*

Keep a journal of temperatures, moon phases and sea level difference for 5-7 days in your area and create an equation using these integers.



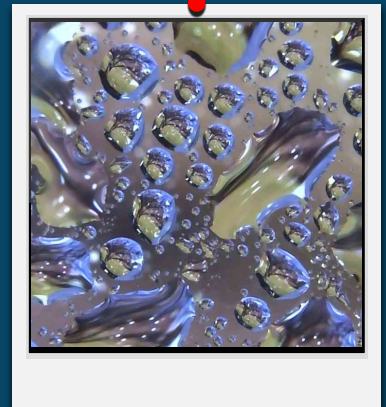
9-12 Exploration

Identify an object in the night sky (Some planets like Venus, and Mercury, and stars such as Spica and the Pleiades star cluster are visible this month). Devise a way to track this object over 5-7 nights and record its location at the same time each night. Check this site for information: <https://bit.ly/3jX3lu1>



Close-Up Capture

Can you identify this close-up capture?



Learn from Locals

Derek Gallant

Derek is an outdoor enthusiast and teacher who dreams of outdoor classrooms at schools across the province. Through the wisdom and education of many Indigenous friendships, Derek has learned to appreciate the importance of stories as he gets to teach us about salmon and culture through the art of storytelling. Contact him to visit your class: derek.gallant@nbed.nb.ca

