

# MOTHER & CHILD EMOTIONAL POWER DROP-IN GROUP



*Come and join us on exploring  
the role of emotional well-being  
in early childhood while  
becoming aware of your child's  
emotions.*

When:

Monday 10:30 am – 12:00 pm

*We have play, reading time,  
and arts & craft.*

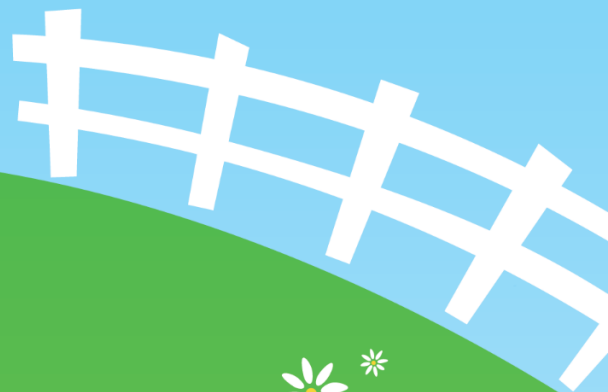
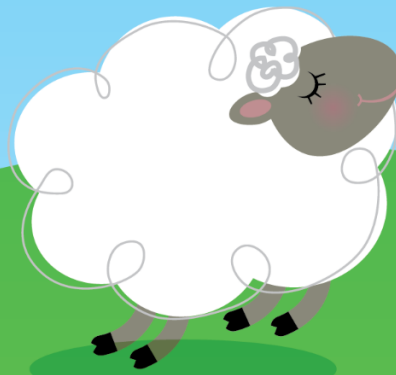
April 3 to May 29<sup>th</sup>, 2023  
*Except on Statutory Holidays  
April 10<sup>th</sup> and May 22<sup>nd</sup>.*

Where:

Tommy Douglas Library, 7311  
Kingsway, Burnaby, BC

*Connect with others in our  
parenting session to discuss  
topics such as children's  
developmental stages, nutrition,  
behaviours and more.*

Children's Room



Snacks and refreshments are provided for children

For more information: [cwwa@vlmfss.ca](mailto:cwwa@vlmfss.ca) – 604- 436-1025 (Ramzia and Maria Elena)